



HEALTH, SOCIAL CARE AND WELLBEING SCRUTINY COMMITTEE - 4TH DECEMBER 2012

SUBJECT: RHYMNEY INTEGRATED HEALTH AND SOCIAL CARE RESOURCE CENTRE

REPORT BY: CORPORATE DIRECTOR SOCIAL SERVICES

1. PURPOSE OF REPORT

- 1.1 To update Members with regard to the development of the Rhymney Integrated Health And Social Care Resource Centre.

2. SUMMARY

- 2.1 The development of the Integrated Health and Social Care Resource Centre responds to the commitment given to the population in the North of Caerphilly County Borough during consultations around the development of the new hospital at Ysbyty Ystrad Fawr. This centre is viewed as a strategic priority for the Local Service Board, the Health Board and the Local Authority.

Previous reports relating to the development of the integrated centre were made to Scrutiny Committee on the 14 September 2010, 7 December 2010 and 11 January 2011.

3. LINKS TO STRATEGY

- 3.1 The Integrated Health and Social Care Resource Centre will act as a co-ordinating hub in the development and provision of services in the North locality. It will enhance existing community services capacity and bring together a number of health and social care teams who will provide services in the community and from the centre itself. The development is consistent with the principles of both national and local direction, however specifically with the vision contained within 'Setting the Direction' and the Gwent Frailty Programme.

4. THE REPORT

- 4.1 In September 2010 and December 2010 Scrutiny Committee received reports relating to the development of an integrated health and social care resource centre in the north of the borough. These reports centred on proposals for the role and function of the centre and how the centre was going to be funded. This report brings Members up to date with progress in relation to the construction of the building and the services that will operate from it.
- 4.2 Discussions around the development of the resource centre in the north of the borough have been ongoing for a number of years and have been a key factor in the development of Ysbyty Ystrad Fawr and the subsequent closure of Redwood Hospital. It is envisaged the centre will serve the following communities in the north of the borough:

- Abertysswg
- Deri & Groesfaen
- Fochriw
- New Tredegar
- Pontlottyn
- Rhymney (includes Moriah & Twyn Carno)

4.3 The centre is an innovative development and will bring together a range of health and social care services under one roof. The new model of health and social care will also enable more people to receive care provided in the community.

4.4 Under current proposals the centre will accommodate the following services

Services for patients/clients –

- Relocation of two GP surgeries
- 12 in patient beds
- Optometrist
- Range of visiting services e.g. midwifery, podiatry
- Dental suite
- Day opportunity services
- Pharmacy

Base for staff-

- District nurses
- School nursing services
- Health visiting services
- Mental health services
- Older people's assessment team
- Children's services team base

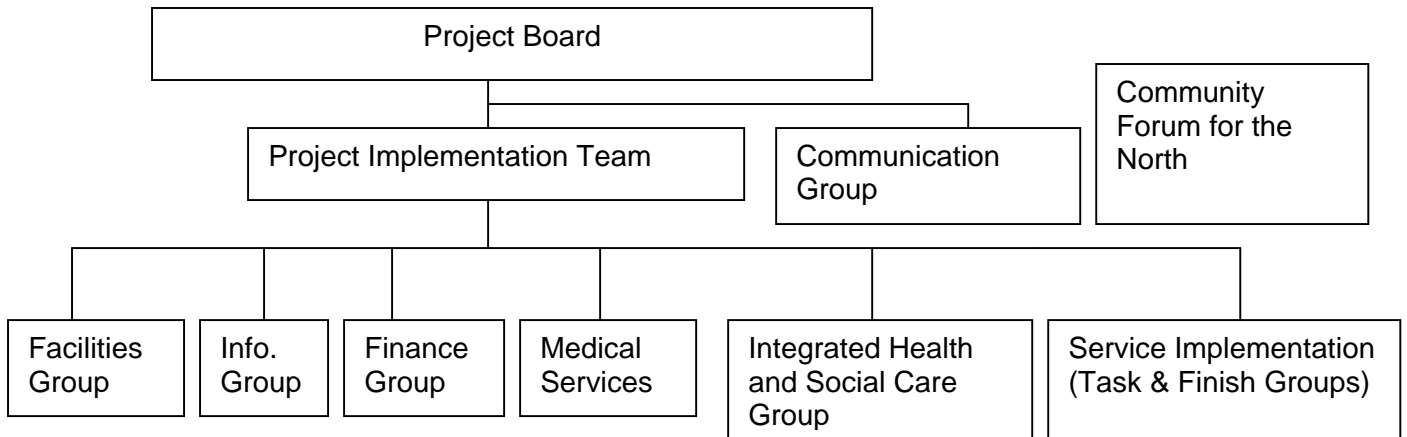
4.5 In terms of construction of the building work started on site on the Lawn Industrial Estate in Rhymney on 30 April 2012. The steel frame for the building has now been erected. Due to the unusually inclement weather in June and early July, the contractors have reported that they have fallen 1.5 weeks behind their programme. It is envisaged that the centre will open in August 2013.

4.6 In terms of the ongoing operation of the centre and following a north service modelling workshop, a number of Task and Finish groups have now been established to consider specific service areas such as –

- Mental Health (including substance misuse)
- In patient beds
- Children and families
- Learning disability
- Health promotion
- Professions allied to health
- Staff accommodation
- Primary care/GP services
- Palliative Care

4.7 Meetings have already been held to discuss mental health services, in patient beds, children and family services, learning disability services, flexible accommodation and palliative care and it is anticipated that the remainder of the groups will meet within the next few weeks. Action plans are prepared following each Task and Finish Group meeting and issues raised will be reported to the Project Implementation Group and/or Project Board as appropriate.

- 4.8 As the project is moving into an implementation stage, the opportunity has been taken to review the project structure. Consequently the ongoing development and implementation of the project will be overseen by the following groups:



- 4.9 All of the above groups have representation from Social Services.

- 4.10 In terms of public engagement there have been a number of newsletters circulated to the locality community and on the 7 November 2012 a Community update event took place. It is envisaged that there will be ongoing dialogue and key dates identified include:

December 2012	First meeting of the communication group
January 2013	Caerphilly Single Plan – Development of integrated resource centre model.
May / June 2013	Confirmation of service models
July 2013	Walk around the integrated resource centre.

5. EQUALITIES IMPLICATIONS

- 5.1 An equalities impact assessment has been completed by Aneurin Bevan Health Board in their role as lead commissioner.

6. FINANCIAL IMPLICATIONS

- 6.1 The annual running cost of the Resource Centre will be circa £1.9m and the funding of this cost has been subject to significant negotiation during the last 3 years. £1.3m will be met through redirecting Wanless funding, £362k of which is currently supporting existing services within Social Services. This funding transfer has been built into the Directorate's Medium-Term Financial Plan along with a further £180k, which will be required to fund the rent and other costs relating to the building.

7. PERSONNEL IMPLICATIONS

- 7.1 The development will require several Social Services teams to relocate from their existing bases to the integrated centre and staff are aware of this development. The only direct personnel implications relate to the two catering staff at Oaklands Day Centre. Catering at the centre will be managed by ABHB and discussions are ongoing with regard to these staff transferring to the Health Board.

8. CONSULTATIONS

8.1 All comments from consultations are reflected in this report.

9. RECOMMENDATIONS

9.1 Members are asked to note the progress made in terms of developing the integrated resource centre at Rhymney. A further report will be brought to Scrutiny Committee when the final service model is agreed.

10. REASONS FOR THE RECOMMENDATIONS

10.1 This report updates Members on progress in relation to the Rhymney Integrated Health And Social Care Resource Centre and explains the ongoing work in terms of agreeing final service models and the continued public engagement / consultation.

Author: Dave Street, Assistant Director, Adult Services
Streed@caerphilly.gov.uk

Consultees: Social Services Senior Management Team
Councillor Robin Woodyatt, Cabinet Member For Social Services
Bobby Bolt, Divisional Director, Primary Care & Networks, Anuerin Bevan Health Board
Bronwen John, Head Of Partnerships & Networks, Anuerin Bevan Health Board
Kathryn Wall, Project Officer, Anuerin Bevan Health Board